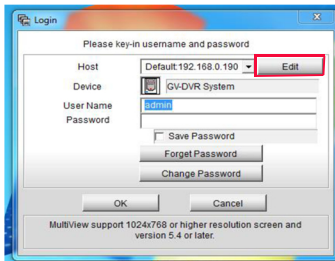
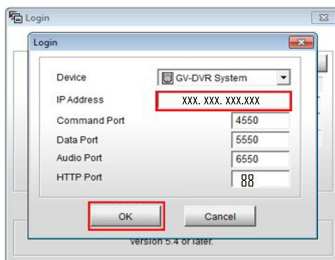




DMMultiView is a multi-channel viewer, allowing users to view up to 32 live cameras simultaneously.



Click the Edit button to add your Geovision Surveillance DVR.
Then on the menu below and to the right, you will enter the Remote IP Address of your DVR.



Then hit OK



Now you will be directed back to the Main Menu.
Go ahead and enter the Username and Password of your Geovision Surveillance DVR and click OK

You should now be connected remotely to your Geovision Surveillance DVR. (Shown Below)

